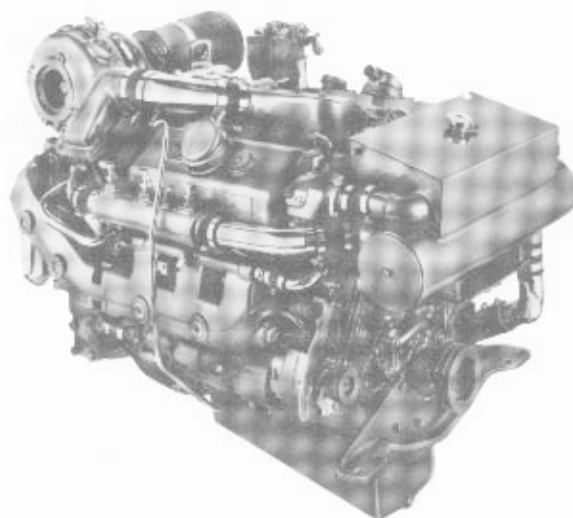


DETROIT DIESEL Series 53

**Marine Model
Pleasure Craft**

6V-53TI 400 BHP



General Specifications

Basic Engine	6V-53TI
Model	5062-5301
Description	Turbocharged-Intercooled
Number of Cylinders	6
Bore and Stroke	3.875 in x 4.5 in (98 mm x 114 mm)
Displacement	318 cu in (5.22 liters)
Compression Ratio	18.0 to 1
Weight (dry)	2325 lbs (1055 kg)

Rated Power Output—Maximum

Gross Power	400 BHP (298 kW) @ 2800 RPM
Net Power	382 SHP (285 kW) @ 2800 RPM

Equipment Specifications

Air Inlet Housing—With manual shutdown
Air Silencer
Intercooler—Single pass with raw water coolant supply
Alternator—12 volt, 90 amp
Cooling System—Low profile tube and shell with integral expansion tank, raw water pump
Crankshaft Pulley—2 grooves, .50 inch wide
Engine Mounting Brackets—for both engine and marine gear
Exhaust System—Fresh water-cooled manifolds and turbine housing; port or starboard exhaust connection; raw water cooled 90° exhaust elbow
Flywheel Housing—SAE #3
Fuel System—Cam operated unit injectors with low pressure USCG type A external hoses, fuel filters and cooler
Governor—Variable speed
Lube Oil Filter—Full flow, spin on
Marine Gear—Detroit Diesel-507-1 (1.10, 1.51, 1.77, 1.98, 2.54 reduction ratios)
Oil Pan—Cast iron, designed for 0° - 17° inclination angle, rear sump
Starting Motor—12 volt

Rating conditions: ISO 3046, SAE J1349, SAE J1228
77°F (25°C) and 29.31 in. Hg. (99kPa) Barometer (Dry)

For a complete listing of standard and optional equipment,
consult your authorized Detroit Diesel Corporation representative.

